



www.HylineOffroad.com

1507C West Park Avenue • Perkasio, PA 18944
 Tel: 215/257-4323 • Fax: 215/257-4364 • 888-HYLINE 1 (888/495-4631)

Proudly Made In USA

Installation Instructions:

XJ Hood Louver Panel
 Part Number: **XJ-50HLP**

Vehicle Fitment:

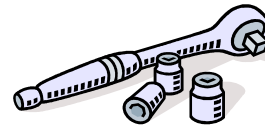
1987-2001 Jeep Cherokee

Parts List

Qty:

- 1 Left Side Louver Panel
- 1 Right Side Louver Panel
- 1 Steel Template
- 50 Nylon Locknuts
- 2 10-32 Pan Head Screws

Tools Needed



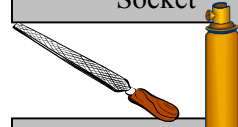
Ratchet
 13mm & 3/8"
 Socket



Electric Drill
 1/16", 13/64" & 1/4"
 Bit, 1" Hole Saw



Jig Saw OR
 Cut Off Wheel



File OR Sandpaper
 Clear Spray Paint



Safety Glasses



Flat Screw Driver

Congratulations on your purchase of the Hyline Offroad Hood Louver Panel. All of our products are completely manufactured in our facility located in Perkasio, PA. They are designed and engineered by Offroad enthusiasts just like you to be rock solid at an affordable price. Hyline Offroad would like to thank you for your recent purchase and look forward to serving you in the future.

Hyline Offroad Staff

PLEASE READ INSTRUCTIONS BEFORE BEGINNING INSTALLATION

BEFORE INSTALLING

If you ordered the Hood Louver Panels raw you should paint, anodize, powder coat, etc. now before installation onto vehicle. PEEL OFF THE VINYL PROTECTANT COVERING BEFORE PAINTING OR FINISHING. If Hood Louver Panel was ordered black powder coated your now ready to continue to step 1.

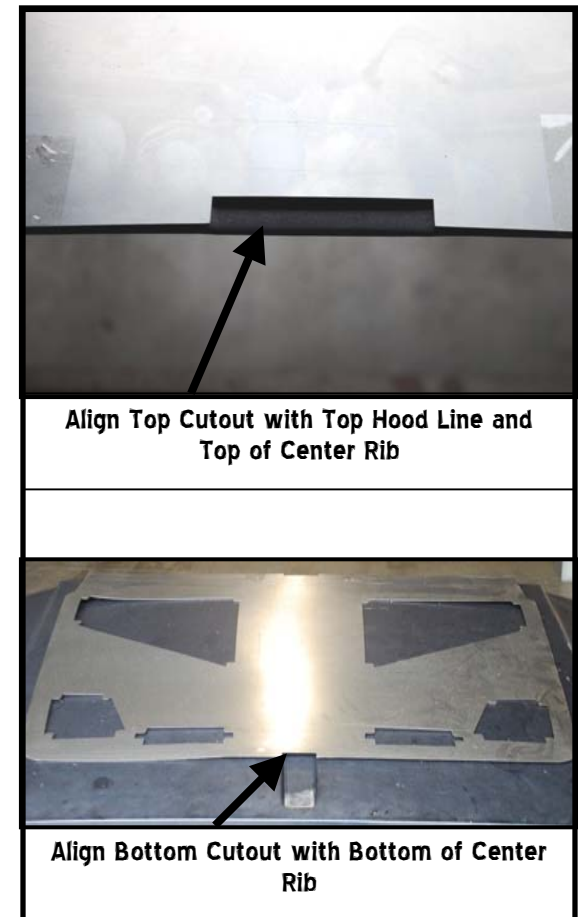
Hood Louver Panel Installation

Step 1 – As a safety precaution - Remove the hood from your vehicle before drilling or cutting. First, open the hood and prop open. Then disconnect the Hood Release cable from the latch mechanism bracket. You may need to bend the bracket forward slightly to gain access to unhook the cable. Now using the 13mm socket you can unbolt the four bolts from the hood hinges. The hood should now be free to remove.

Step 2 – Once the hood is removed, place the hood on a flat, solid work area. To prevent potential scratching you may want to use painters tape and mask off the areas on the hood that the template comes in contact with that will not be covered by the hood louver panels. The center area is generally where you want to tape.

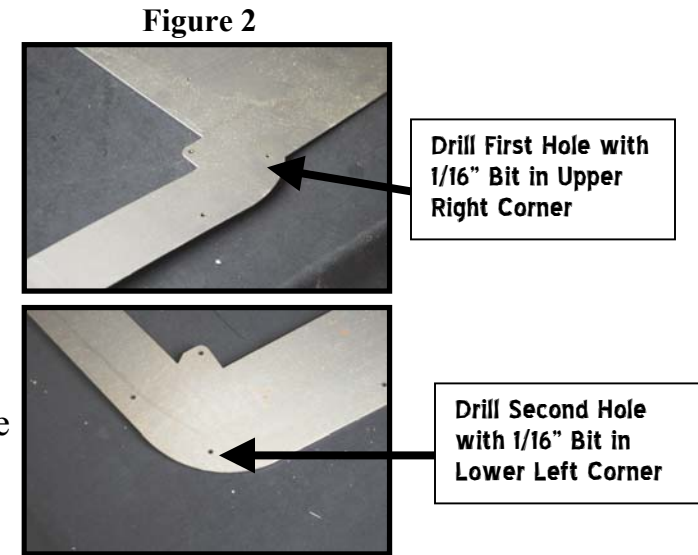
Step 3 – Position the steel template so that the top edge of the template is in line with the top edge of the hood and the notches in the top and bottom of the template align with the center rib that runs down the center of the hood. (See Figure 1)

Figure 1



Step 4 – Once the template is located properly you can hold or tape the template in place and drill the first hole using the 1/16” Bit. Then use the 13/64” Bit and re-drill that same hole through the template and hood. (See Figure 2)

Step 5 – Now fasten one of the supplied 10-32 Pan Head Screws with nylon lock nut through the hole you just drilled. This will hold the template in place when drilling the second hole.



Step 6 – Drill the second hole in the opposite corner (bottom left) using the same process as in Step 4. Fasten the other supplied pan head screw with nylon lock nut through this hole. Now the template should be held in place securely enough to drill all the other holes.

NOTE: USE 1/16” BIT AS PILOT HOLE BEFORE DRILLING WITH 1/4” BIT TO BETTER ENSURE ACCURACY! DO NOT MOVE TEMPLATE UNTIL STEP # 9.

Step 7 – Using 1/16” Bit, drill the small holes (50 total), then drill the holes in the four corners of each cutout (24 holes total, 6 cutouts)

Step 8 – Using a marker trace the inside perimeter of the cutouts. You’ll use these as reference lines when cutting these out.

Step 9 – Now carefully remove the template, making sure you don’t scratch the paint. Using the 1/4” Bit, re-drill all the holes. Take your time and drill slowly so you don’t dent the hood. You’ll need to drill through the hood and hood supports in four locations. See NOTE and Figure 3 on the next page.

****NOTE** You will need to use the 1” hole saw to expand 4 holes under the hood in the support channels in order to attach the nut to the stud. See (Figure 3)**

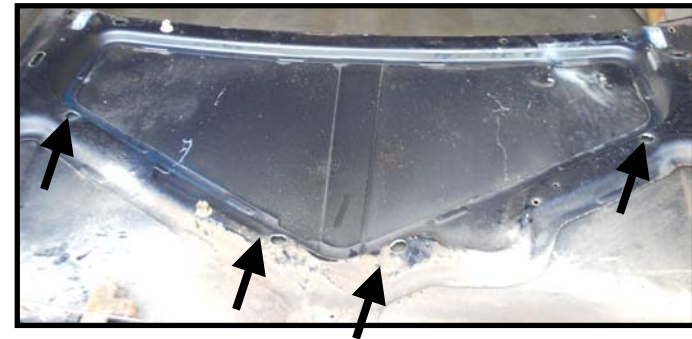


Figure 3

Step 10 – Once drilling is completed, Use 1” Hole saw and drill each corner of the 6 cutouts (24 times total).

Step 11 – Now you can use a jigsaw or cutoff wheel to trim out the cutouts. Simply follow the lines you traced from the template. After drilling and cutting, use the file to deburr and clear spray paint to prevent rust.

Step 12 – Install the Left Hood Louver Panel onto hood and assemble nylon locknuts to threaded studs using the 3/8” socket. Tighten the nuts just enough until they touch the steel hood.

DO NOT OVERTIGHTEN NUTS! OVERTIGHTENING WILL CAUSE DISTORTION OF PANEL!

Step 13 – Follow the same process as in Step 12 and install the Right Hood Louver Panel. Reinstall your hood onto the Jeep, reattach the hood release cable and you’re done.

Send your OFFROAD pictures to pics@HylineOffroad.com . If we choose any one of your pictures to be used on our website, We send you a FREE Hyline Offroad T-Shirt.



Attention

Installation instructions provided must be read and followed exactly when installing product. Failure to do so could potentially result in injury or death of any occupants in the vehicle. **WEAR SEAT BELTS AT ALL TIMES WHEN DRIVING!**

Though our products are rugged, they are primarily designed and built to enhance the appearance of the vehicle and will not protect from death or injury in the event of an accident. Adhere to all vehicle manufacturers specifications