



**RUST
BUSTER**
FRAMEWORKS

RB4067L/RB4067R

**Jeep® TJ Wrangler 1997-2006
Full Torque Box**



REQUIRED TOOLS

Jack Stands or Lift
Mig Welder
Paint/Primer
Locking Pliers
Hand Grinder
Cutting Wheel or Torch
Welding Gloves
Welding Hood/Shield
Ear & Eye Protection
Sockets & Ratchet
Fire Extinguisher & Water

KIT CONTAINS

Torque Box

QTY

1
3



RB4067L/RB4067R

**Jeep® TJ Wrangler 1997-2006
Full Torque Box**

1) PREPARING YOUR VEHICLE

Begin by disconnecting your battery prior to starting your installation.

Inspect your vehicle for leaking fuel lines, fuel tank and engine components. If you have fuel leaks repair all leaks prior to starting your installation. If your fuel tank is near your welding area **remove your tank prior to welding.**

Remove all combustible items above the work area such as seats, carpets, padding, etc.

Keep all flammable materials away from the vehicle work area.

2) PREPARING YOUR WORKSTATION

Keep a fire extinguisher and water close by in the case of fire and make sure you always have a designated "Fire Watch" to assist during the cutting or welding phases.

Abide by all apprenticed welding safety standards and practices.

Always use appropriate welding eye protection, ear protection, and work and fire safety gloves during the installation and within the work area.



WARNING!

If you are unsure on how to perform the installation or how to operate any of the required tools listed above, it is **HIGHLY** advised that you enlist the work of a certified welder/installer.

Failure to follow proper safety precautions and instructions may result in serious injury. **The user assumes all liability when installing the product.**



**RUST
BUSTER**
FRAMEWORKS

RB4067L/RB4067R

**Jeep® TJ Wrangler 1997-2006
Full Torque Box**

3) PREPARING FOR YOUR INSTALL

With a 16mm socket, remove your vehicle's 3 body mount bolts.



With a hydraulic jack and block or jack stands, push up on the body of the vehicle, near the center, enough so that you can pull the body mount bushing out of its bracket.



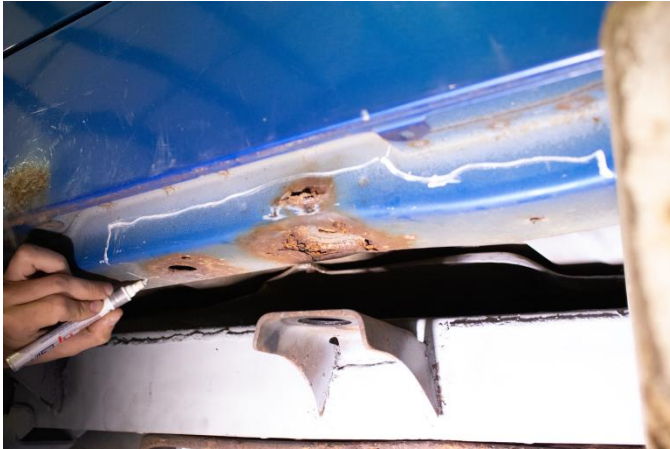
Hold the part up to the body and mark out its installation location, to be cut out later.





RB4067L/RB4067R

Jeep® TJ Wrangler 1997-2006 Full Torque Box



Depending on how you intend to cut, clean the cut zones free of rust and down to bare metal.

4) CUT

Begin cutting away the body along the drawn line.



Grind all cut edges smooth for easier fitment.



5) TEST FIT PART

Attempt to push the part into place and over the body. Take note of any difficulties and cut away any obstructions. We recommend using jack stands to hold the part tight to the body.



Coat the part and area with a weld-able primer prior

The part may fit snugly and require force.

6) WELDING PREP

Once the part has been fitted, prepare your weld zones by clearing away any rust or debris, revealing bare metal.

(OPTIONAL): Coat the part with a weld-able primer or other rust inhibitor to help prevent or reduce the risk of rust formation.

Tack weld it into place to prevent it from moving later.

7) WELD

Remove any remaining potential fire hazards on both the vehicle and surrounding area. Following proper welding procedures begin welding the part onto the frame rails.

100% weld around all edges.



RB4067L/RB4067R

Jeep® TJ Wrangler 1997-2006 Full Torque Box

8) PAINT AND PROTECT

If you chose not to protect your part in (Step 6), coat the part and work area with a primer or other rust inhibitor to help prevent or reduce the risk of rust formation.



9) REASSEMBLE VEHICLE

Place your body mount bushing back into the bracket.

Lower the body back down.

Reinstall your body mount bolts and bushings with a 16mm socket.



Resecure the remaining body mount bolts.