



Installation instructions

SkyMaster® Fastback Fabric Only Replacement Soft Top for 2004-2006 Jeep® Wrangler LJ

Item # 157010XX

**TJ Wrangler shown.
Throughout this
instruction sheet
pictures of a TJ
Wrangler are used.
Install on LJ
Wrangler is the same.**



Parts List:

A) Top Deck	QTY 1
B) Drivers Side Quarter Window	QTY 1
C) Passenger Side Quarter Window	QTY 1
D) Rear Window	QTY 1
E) Side Tubes	QTY 2
F) Door Surround Brackets	QTY 2
G) Center Bow	QTY 2

Required Tools:

Safety Glasses
Phillips Head Screwdriver
T30 Torx Head and Driver
Drill Motor
1/4" Drill Bit
3/32" Drill Bit
Large towel or Blanket

NOTICE

This Complete Soft Top kit is designed to fit on your Factory soft top installed LJ Jeep® Wrangler when the original soft top rear and center bow have been completely removed. Before beginning your installation of this product, you will need to remove your existing soft top fabric and factory center/rear bows. See below

WARNING

Loss of vehicle control involves risk of death or serious injury, particularly to parts of your body not restrained within vehicle. This product is intended for weather protection only and should not be relied upon to contain occupants in the event of an accident or to protect from either ground contact or falling objects. To reduce risk of accident or injury:

- ALWAYS WEAR SEATBELTS
- Always keep head, arms & body parts within vehicle.
- Fully secure or stow the soft top before driving according to instructions. Never try to latch or fold soft top while driving. Do not use if damaged or worn.
- Read and follow all instructions & warnings accompanying this product, in your vehicle owner's manual and Off Road Driving Supplement.

CAUTION

RISK OF EYE INJURY. Safety glasses should be worn at all times while installing or maintaining this product.



Important Safety information

Your MasterTop® Fabric Only Replacement Top is intended to be used with other MasterTop Products to increase the fair-weather enjoyment of your off-road capable vehicle. Before installation, please take a moment to review the following safety information and installation instructions. Important safety information is generally preceded by one of three signal words indicating the relative risk of injury. The signal words mean:

WARNING A hazardous situation which, if not avoided, could result in death or serious injury. You **CAN** be **KILLED** or **SERIOUSLY HURT** if you don't follow instructions.

CAUTION A hazardous situation which, if not avoided, could result in minor or moderate injury. You **CAN** be moderately **HURT** and also may suffer property damage if you don't follow instructions.

NOTICE Careful attention is required to this instruction or operation but does generally not relate to personal injury. Damage to your MasterTop product or other property may result if you don't follow instructions.

Before you begin Installation:

We are excited that you have chosen the MasterTop Replacement Soft Top Hardware Kit. This high-quality soft top hardware is designed to provide a structure for the installation of a fabric only replacement top. Please note that it is important that you become familiar with the installation process of this top by reading the following instruction sheet and warnings thoroughly. When unpacking, carefully check to make sure all parts are included. If any part is missing or broken, please call MasterTop customer service at 720-575-5440.

Preparation for Installing Fabric Only Replacement Top:

Factory Hardware Requirement:

This product is designed to fit over your original factory soft top hardware, Door Surrounds, Windshield header and factory soft upper metal door frames (if applicable).



Step 1: Remove Existing Soft Top Fabric

Put on safety glasses. After verifying that you have the correct hardware, remove the existing soft top from the vehicle. This will include removing the existing soft top fabric from the front windshield header. This will require the use of a Phillips head screw driver.

To remove the fabric from the front header, fold the top completely down to the rear of the vehicle (see FIG1). With the tailgate open, unscrew all header screws (8 or 14 screws depending on model year) and two corner screws (see FIG2). **Save these screws!**

Once the soft top is removed, Remove the door surrounds and prepare to remove the bows and Windshield header from the vehicle.

Step 1A: Remove Door Surround Seals

Please Note: If you have the rubber seal shown in Fig A this seal must be removed before you install the fabric top to your vehicle. See FIG's A & B.



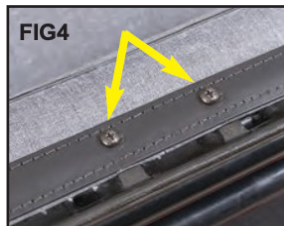
Preparation for Installing Fabric Only Replacement Top:

Step 2: Remove the Factory Front, Rear and Over Door Bows



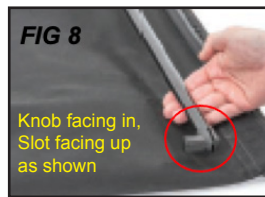
After removing the soft top fabric from your existing hardware, you will need to disengage the factory front, rear and over door bows. The front and rear bows are removed from the bow mounts on the vertical roll bar using a T-30 Torx head and driver or quick release knobs (Fig1). The bow mount brackets can be left on the Roll bar or removed if you wish as they will not be used again. The front bow will be attached to the Windshield Header. Using a Philips head screw driver, remove the front over door bows from the windshield header (Fig 2). On the door surround, there is a pin that holds the over door bows to the Door surrounds. This pin must also be removed from the door surrounds (FIG 2A). Once the front over door bows are removed from the vehicle, Set the front/rear bow assembly aside and locate the windshield header. Remove the existing fabric from the windshield header by removing the header screws. **SAVE these Screws!**

Preparation for Installing Fabric Only Replacement Top:



Step 3: Install Top Fabric on the Front Windshield Channel

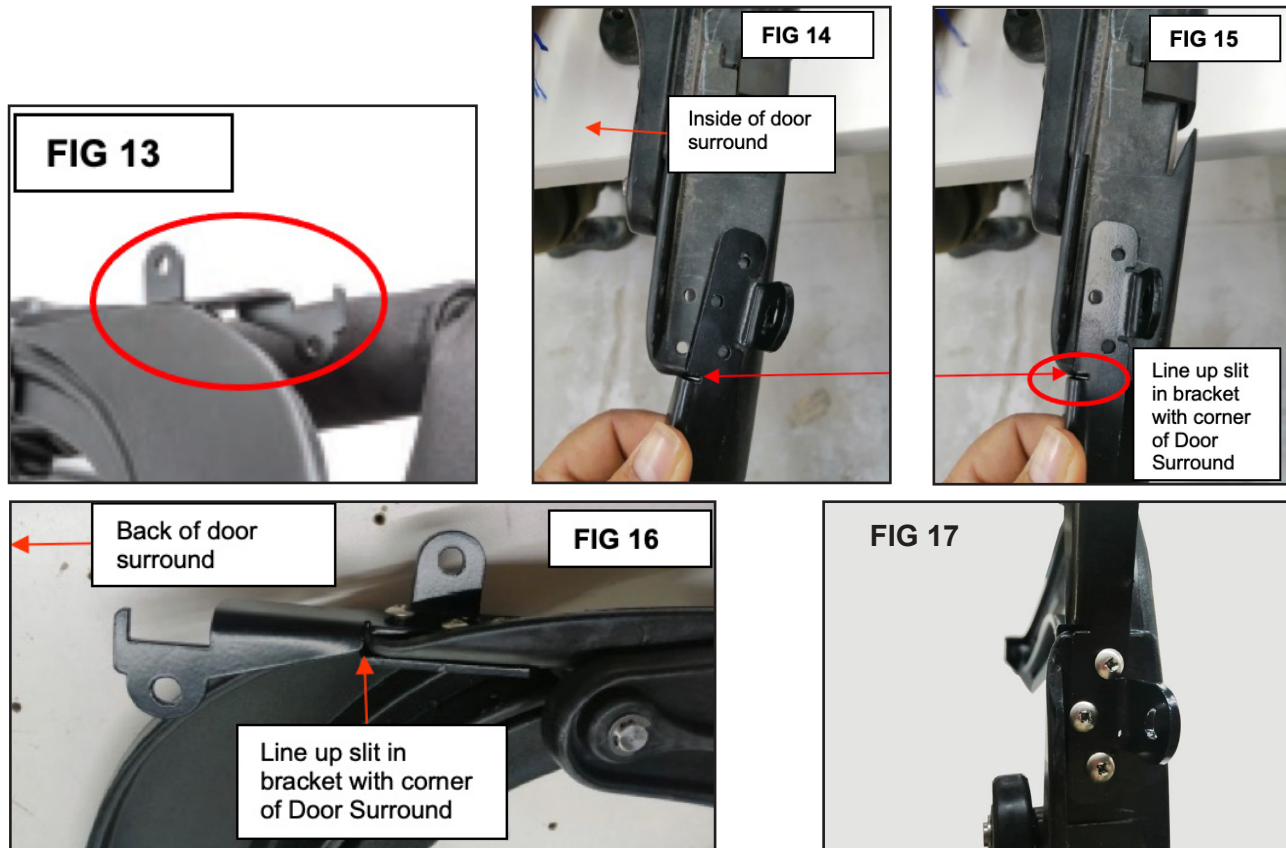
Place the soft top fabric on the ground (on top of a large blanket or towel) with the underside facing up and the front of the fabric facing you (FIG 3). Lay the front windshield header with the underside facing up into each corner pocket with the header plastic strip sewn on the top facing up on top of the windshield header. Locate the center hole or two center holes on the plastic strip and secure the center of plastic header using the screw(s) that were removed in step one. See Fig 4. Proceed to install the remaining seven or thirteen header screws (depending on model year) along the plastic header lining them up with the holes on the front header itself. Lift up the header and wrap the corner pockets around the ends of the front Header lining up the corner screws with the corner holes in the header. Install the two corner screws (see Fig 5).



Step 4: Install the Side over door tubes to the windshield Header

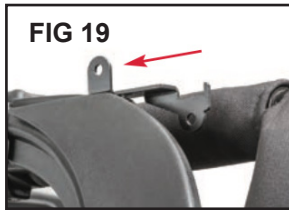
Locate the two over door bows. These bows have the quick release knuckles pre-installed on the rear of the bow ends and have the set screw installed on the other end of the bow. The "knob" on the bow end must be facing inward on the header/Top deck assembly and the slot of the quick release must be facing up as shown in Figs 7 & 8. Remove the set screw on the non-quick release end. Slip the front bow end into the Header mount as shown in Fig 9 making sure it is as far forward as possible. Using a 3/32" drill bit and drill, drill a pilot hole through the pre-drilled hole located on the over door tube (Fig 10). Repeat this on the opposite side (Fig11). Remove the Bow end from the Header and again using the 1/8" drill bit, drill a hole through the previous drilled pilot holes into the inner steel rod of the header until you feel the drill go through the steel inner. This may take some force. Once the hole is drilled, locate the set screw and using a Phillips head screw driver, install the over door bow to the Header (Fig 12). Repeat this on the other side of the header so you have both side tubes installed to the header/top deck assembly. Set this completed header/fabric/over door bow assembly aside.

Step 5: Install the Door Surround Brackets to the Door Surrounds



This step requires you to install the center bow/over door bracket on top of the factory door surrounds (FIG 13). Before you install these brackets, you will need to remove the factory over door "pin" from the door surround. This can be done with a Phillips head screw driver. Locate the Door surround brackets. Place the bracket as shown in FIG 14 and line up the slit in the bracket as shown in FIG's 14&15 with the vertical tab on the outside of the door surround and the rear of the bracket hanging off the end of the door surround (Fig 16). Mark the three-hole locations through the bracket and using a 1/4" drill bit, drill three holes in the door surround. Note that one of the three holes in the door surround may already line up with the bracket so you may only have to drill two holes. Using the enclosed screws and a Phillips head screw driver, install the bracket to the door surround using the enclosed backing plate to "sandwich" the bracket to the door surround (FIG 17).





Step 6: Installing the Header and Top Deck Assembly to the Door Surrounds

Locate the Header and Top Deck assembly completed in step one.

With the help of a friend, place the header/deck assembly on the vehicle locating the front header on the top of the windshield and the rest of the fabric spread back on the rear of the vehicle (FIG18).

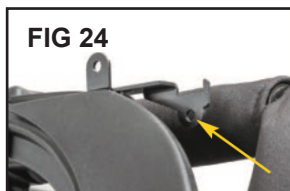
Under the fabric, locate the over door bow installed in step one and place the quick release end in the top- front hole of the pre-installed bow mount bracket pulling the knob out until you hear a "click" (FIGs 19, 20, 21 & 22).

NOTICE

After installing the side tubes to the door surround brackets please check the location of the front header to make sure it is snug and does not "over-hang" the front of the windshield.



Repeat this on the opposite side of the vehicle and fold back the front portion of the top as shown in FIG23.



Step 7: Installing the Center Bow to the Door Surrounds

Locate the Center Bow assembly with the pre-installed quick release knuckles on the ends. With the top folded back as shown in FIG23, locate the bottom rear-most bracket hole (FIG24) and slip the rear bow through the webbing strap loop located on corner of the top deck (Fig 24A).



Place the Quick Release knob into the hole on the rear of the bow mount bracket (Knob facing out) pull the knob out and down over the bracket until you hear a "click" (FIGs 25 & 26). Repeat this procedure (including the placement of the bow through the in- stalled webbing strap loop) on the opposite side of the vehicle completing the installation of the center bow to the door surrounds.

Installation of Fabric Only Replacement Top:



Step 8: Installing the Top Deck to the Jeep®

With the fabric installed on the header, fold the top and header forward so it rests on the windshield (Fig 27)

Un-clip the sun visors and pull the top down to engage the header clamps on each side of the windshield and secure the Header to the windshield (FIGs 28, 29 & 30).



Once the front header is secured, go to the rear corner of the Top deck and locate the rear corner straps.

Thread the straps down and under the seat belt mount as shown in FIGs 31 & 32 and thread the strap through the buckle (FIG 33).

Repeat this on the other side of the vehicle and while pulling towards the rear of the vehicle, tighten one strap and then the other side strap tightening up the top deck. Do not tighten completely (FIG34).





Installation of Fabric Only Replacement Top:



IMPORTANT: The top deck **MUST** be centered on the rear of the vehicle for the windows to fit properly.

When tightening the rear straps notice the location of the rear bar sewn into the pocket on the top deck. It needs to be centered on the rear roll bar legs.

Once the rear straps are secured (but not tightened all the way), go inside the Jeep and locate the long center bow flap. Wrap this bow flap tightly around the center bow and secure it with the hook and loop fastener (FIGs 35 & 36).

Step 8A: Installing the Quarter and Rear Windows to the Top Deck

To ensure the top is centered on the vehicle you will be installing the two quarter windows and the rear window to the top deck and to each other before securing it to the vehicle body.

Pro-Install TIP: To make this as easy as possible, you may have to release the front windshield header (release but not un-hook) and loosen the rear corner straps installed in step 4. This will allow you to line up all window zippers and attachments. The rear corner straps and header will need to be re-tightened/clamped before using the top. Locate the drivers rear quarter window. Line up and slide the rear quarter window into the "C" Channel as shown in FIGs 37, 38, 39 & 40. Repeat this on the passenger side of the vehicle.

Step 8B: Installing the Rear Window to the Top Deck

Locate the rear window and line up and slide the rear window into the "C" Channel located at the top of the rear portion of the top deck (FIGs 41, 42 & 43).

Once both quarter windows are secured to the top deck, line up the driver's side rear zipper on the quarter window and on the rear window and zip it down a few inches (FIG 44). Repeat this on the passenger side of the rear window.

You may have to lift the quarter window up to secure this second zipper. Once both side zippers are secure, zip the rear window zippers down about half way (FIG 45).

You will close these zippers completely at the end of step 10.



NOTICE

When removing the quarter and rear windows from the Top deck be sure to slide them out completely before pulling down. Dis-engage the side hook and loop before sliding the windows out. **DO NOT "Peel" the windows out!** Failure to completely disengage the windows from the "C" Channel will damage the Top and quarter window!

FIG 46



Each Time you remove the windows:

Completely pull the windows out of the "C" Channel before pulling the windows down!

Do not "Peel" the windows out.

NOTICE

There may be times when the "P" extrusion may come out of the "C" Channel ends due to extreme downward pressure. This is normal. If this occurs, slide the "P" extrusion out of the C channel and re-install securing the window back into the "C" Channel.

Installation of Fabric Only Replacement Top:

FIG 47



FIG 48



Step 9: Installing the Top to the Jeep® Body

Starting at the driver's side front, right behind the front seat, attach the front vertical belt rail into the door surround slot by "rolling the plastic into the slot" (FIGs 47 & 48).

FIG 49



FIG 50



Once secure move to the rear driver's side corner and "roll" the plastic into the Jeep body corner belt rail as shown in FIGs 49 & 50. Repeat this procedure on the passenger side.

FIG 51

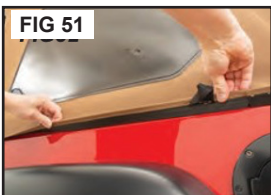


FIG 52



Once both corners are secured, "roll" the plastic on the bottom of the quarter windows into the body belt rail as shown in FIGs 51 & 52.

FIG 53

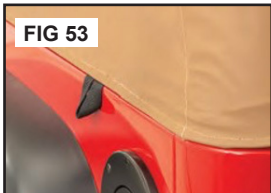
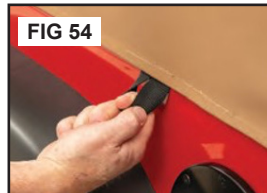


FIG 54



NOTE: as shown in FIGs 53 & 54 there is a web loop installed on the side of the quarter window.

This is to be used for unhooking the quarter window only and is not designed to be pulled down on for installation!

Repeat the quarter window install on the passenger side of the vehicle. You may have to pull the corners around towards the front or back of the vehicle to center the top on the vehicle. Once all body belt rail attachments are secure and the top is centered, you can now reach through the rear zipper on each side and tighten the corner straps.

Alternate tightening to keep the top centered. Seal hook and loop around windows.





FIG 55



FIG 56

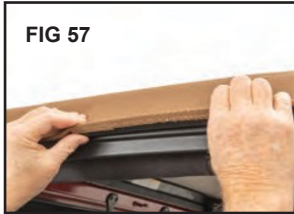


FIG 57



FIG 58

Step 10: Secure the Over Door Attachments

Locate the two plastic strips sewn to the sides of the top above each door (FIG55).

Starting with the front strips, slip the strips into the channel in the door surround above the door opening (FIGs 56 & 57).

Secure the strips on each side of the vehicle. When complete each side should look like FIG58.

NOTICE

Please see separate attached sheet for complete care and maintenance suggestions to prolong the life of your MasterTop Fabric only replacement soft top.



FIG 59



FIG 60

Step 11: Install the Tailgate Bar and Rear Window to the Body of the Jeep®

Slide the "C" shaped channel onto the tube sewn into the rear window with the round seal down. See FIG 59 for correct alignment.

Slide the tailgate bar all the way across the rear curtain. Open the rear tailgate. As shown in FIG 60, insert/roll the tailgate bar into the mounts on each side of the tailgate with the vinyl side of the rear curtain facing the rear of the vehicle.

Once the Tailgate bar is secure, lower zippers on both sides of the rear curtain (FIG 61) and then secure the rear zipper cover flap as shown in FIG 62.



FIG 61



FIG 62

Using your SkyMaster Fastback Soft Top



FIG 63

Folding Back the Front Section of your Top

Your SkyMaster Replacement top is designed to be used with your factory fold back "sunroof" feature if it is a part of your original soft top hardware.

To fold back your SkyMaster Soft Top:

If driving, stop the vehicle and put in park.





Unlatch your over door Attachments from the door Surrounds. (FIG64)

Unlatch the front header from the windshield (FIG65). Pushing up from the middle, fold back the top.

(FIG66). Make sure the center bow is secured through the sewn inside webbing strap. (FIG67)

Make sure the hook and loop is completely attached to the center bow (FIGs 68 & 69)

WARNING

Make sure the hook and loop fastener are tightly secured to the center bow after the front sun roof is folded back. Make sure that each side webbed loop is secured around the center bow. Both rear corner straps must also be secure when the top is folded back These safety measures are designed to secure the top deck to the vehicle and if not adhered to can cause injury, death and a serious accident. Always wear your seat belts when using this product!





Limited 3 Year Warranty

Your MasterTop® accessory is covered by the following Limited Warranty provided exclusively by MasterTop, Inc., 420 J Corporate Circle, Golden, CO 80401.

This Limited Warranty is the only warranty made in connection with your purchase. MasterTop neither assumes nor authorizes any vendor, retailer or other person or entity to assume for it any other obligation or liability in connection with this product or Limited Warranty. This Limited Warranty does not apply and is not cumulative to any accessory or part distributed by any MasterTop distributor for which the Manufacturer provides a separate written warranty.

What is Covered: Subject to the terms, exclusions and limitations herein and with respect only to MasterTop branded accessories first sold in the United States, MasterTop warrants to the initial retail purchaser only that your MasterTop accessory shall be free of defects in material and workmanship; **for a period of 3 years from date of initial retail sale.**

All other warranties are hereby disclaimed, except to the extent prohibited by applicable law in which case any implied warranty of merchantability or fitness for a particular purpose on this product **is limited to 3 years from date of initial retail sale.** MasterTop reserves the rights to: (a.) require invoice or other proof your product is within the terms of this Limited Warranty as a condition of warranty service and, (b.) make future revisions to this product and Limited Warranty without prior notice or obligation to upgrade your product.

What is Not Covered: Your MasterTop Limited Warranty does not cover products or parts MasterTop determines to have been damaged by or subjected to: (a.) installation damage, alteration, modification, failure to maintain or attempted repair or service by anyone not authorized by MasterTop, (b.) normal wear and tear, cosmetic damage or damage from water immersion, (c.) Acts of God, accidents, misuse, negligence, inadequate mounting or impact with vehicle(s), obstacles or other aspects of the environment, (d.) theft, vandalism or other intentional damage, (e.) fleet, rental or commercial use, (f.) use in competition or racing.

Remedy Limited to Repair/Replacement: The exclusive remedy provided hereunder shall, upon MasterTop inspection and at MasterTop's option, be either repair or replacement of product or parts (new or refurbished) covered under this Limited Warranty. Customers requesting warranty consideration on MasterTop Products should first contact MasterTop to obtain a RGA number (720-575-5440). All labor, removal, shipping and installation costs are customer's responsibility.

Other Limitations - Exclusion of Damages

- Your Rights Under State Law:

In consideration of the purchase price paid, neither MasterTop nor any independent MasterTop distributor /licensee are responsible for any time loss, rental costs, or for any incidental, consequential, punitive or other damages you may have or incur in connection with any part or product purchased. Your exclusive remedy hereunder for covered parts is repair/replacement as described above.

This Limited Warranty gives you specific rights. You may also have other rights that vary from state to state. For example, some states do not allow limitations of how long an implied warranty lasts and/or do not allow the exclusion or limitation of incidental or consequential damages, so the limitations and exclusions herein may not apply to you.

©MasterTop, Inc. 2020. All Rights Reserved. The term MasterTop® is a Registered Trademark of MasterTop Incorporated, Registered in U.S. Patent and Trademark Office.
www.MasterTop.com

Part #941052.01 Version 01.07.21

