

THE INFORMATION CONTAINED IN THIS DRAWING IS THE SOLE PROPERTY OF SYNERGY MFG. ANY REPRODUCTION IN PART OR WHOLE WITHOUT THE WRITTEN PERMISSION OF SYNERGY MFG IS PROHIBITED.

Revisions			
Rev.	Description	Date	Approved
A	Initial Release Per ECO 19-142	12/17/19	A.S.

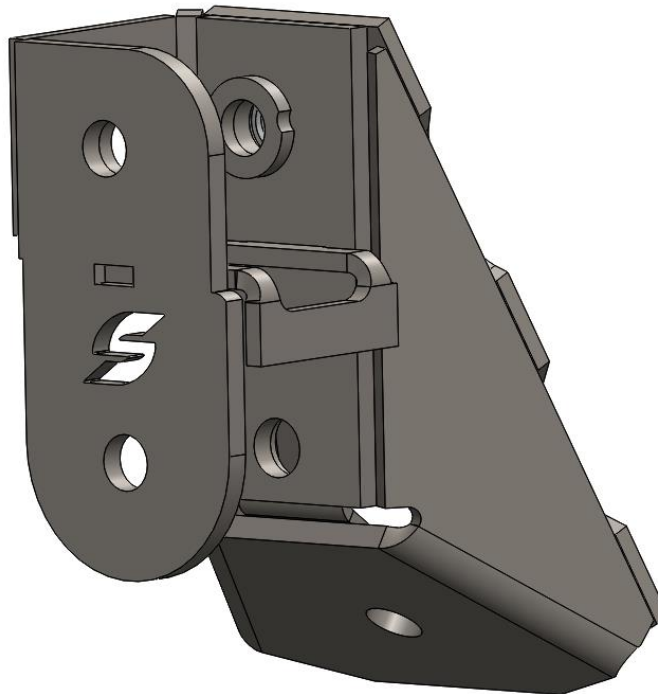


Jeep Wrangler Rear Track Bar Relocation Bracket

Installation Instructions

Applications:

2018+ Jeep Wrangler (JL/JLU)



TITLE:
JEEP JL REAR TRACK BAR RELOCATION BRACKET INSTALLATION INSTRUCTIONS

SIZE	DWG NO:	REV
A	8856-01-INST	A
	SCALE: N/A	PAGE 1 OF 8



JEEP WRANGLER REAR TRACK BAR RELOCATION BRACKET INSTALLATION INSTRUCTIONS

Thank you for purchasing the best aftermarket products available for your vehicle. We strongly feel that the parts you are about to install should meet or exceed your expectations for performance. Proper assembly is critical to the performance of these components and the vehicle as a whole. Please take the time to carefully read these instructions and familiarize yourself with the installation procedure before working on your vehicle. If you have any questions PLEASE contact Synergy Manufacturing BEFORE beginning installation. Thanks again for supporting Synergy – enjoy the performance benefits of the best aftermarket products available for your vehicle!

Synergy Manufacturing

Phone: (805) 242-0397

Email: support@synergymfg.com

Modifying or otherwise altering vehicle components may cause the vehicle to handle differently than originally designed. It is the driver’s responsibility to familiarize themselves with the performance and handling characteristics of the modified vehicle. Vehicles with larger diameter than stock tires must be driven carefully and cannot be expected to perform as stock or meet OEM performance with regard to handling, braking or crash performance. Ensure all replacement components are compatible with vehicle capacities so as not to overload components, especially tires. It is up to the individual to ensure that the vehicle and all components are compatible with the intended vehicle use, including load ratings, road conditions, and driver abilities. Thorough and frequent vehicle inspections are recommended to ensure a safe and reliable state of readiness, especially after off-highway use.

PARTS LIST

8856-01 Jeep Wrangler Bracket		
QTY	Part Number	Description
1	885601-PC	JEEP JL AXLE SIDE RAISED REAR TRACK BAR BRACKET
1	885602-PL	JEEP JL AXLE SIDE REAR TB BRACKET LOWER PLATE
1	885603-PL	JEEP JL AXLE SIDE REAR TB BRACKET NUT TAB
1	4206-01-PL	TRACK BAR BUSHING SLEEVE
2	N/A	M14-2 X 90MM GR 10.9 HEX BOLT
1	N/A	M14-2 X 35MM GR 10.9 HEX BOLT
3	N/A	M14 WASHER
1	N/A	HIGH STRENGTH THREADLOCKER

GENERAL NOTES

- These instructions are also available on our website; www.synergymfg.com. Check the website before you begin for any updated instructions and additional photos or videos for your reference.
- This rear track bar bracket can be used with either the stock or aftermarket track bars. It is designed to re-center the axle under the vehicle at approximately 2-3” of lift, but vehicle to vehicle variances mean that in order to have a perfectly centered axle an adjustable track bar must be used in conjunction with the bracket. A slightly offset axle does not affect drivability in any way.
- This rear track bar bracket requires a minimum of 2” rear bump stop spacing to prevent interference between the bracket and the floor of the vehicle and or the exhaust and the track bar.

TOOLS REQUIRED

- 21 and 22mm Sockets and Wrenches
- Rubber Mallet/Deadblow Hammer
- Torque Wrench

ESTIMATED INSTALLATION TIME

1/2 Hour

INSTALLATION

1. Installation can be done on the ground. There is no need to lift the vehicle off the ground or remove the wheels and tires. Installation can be made easier by raising the vehicle up so there is more room between the axle and the frame. Either way, the vehicle should be parked on a flat level surface and placed in park or in gear with the parking brake set.
2. Loosen both the frame side and axle side rear track bar bolts with a 21mm wrench and socket. Remove the axle side bolt. See **Figure 1**.



Figure 1. Removing Axle Side Rear Track Bar Bolt

3. Pull the rear track bar down and out of the factory track bar bracket. Swing the bar up over the bracket and hang it from the frame or exhaust. See **Figure 2**.

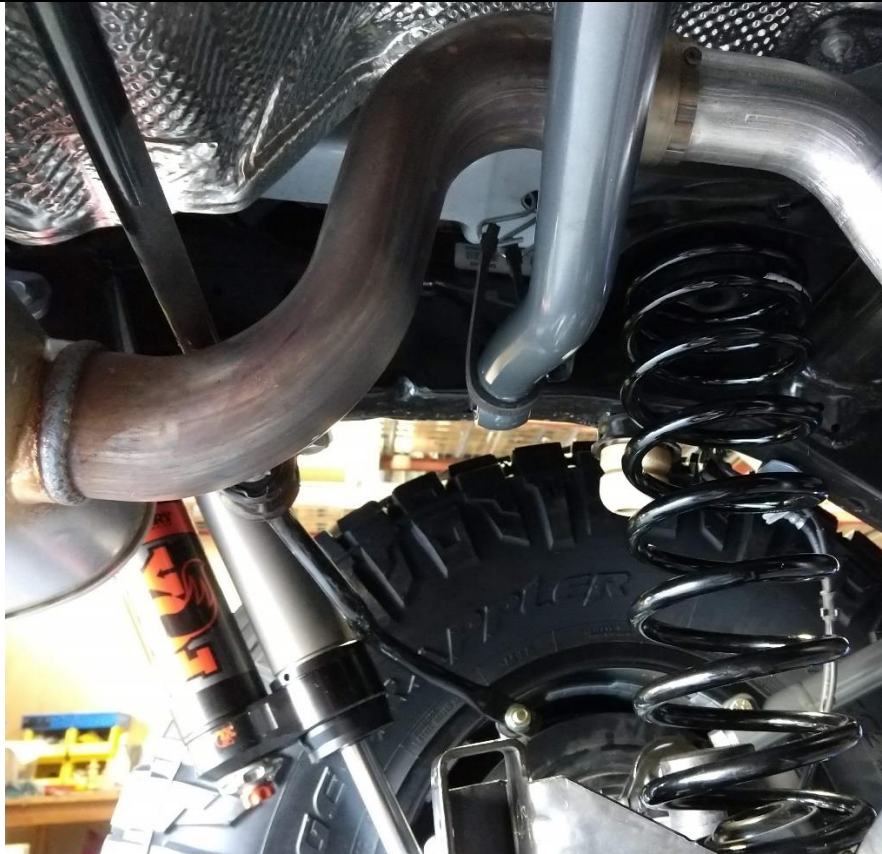


Figure 2. Track Bar Hanging from Frame

4. Install the Synergy Manufacturing Track Bar Bracket over the factory track bar bracket. It will be necessary to lightly tap the bracket down over the top of the factory bracket with a rubber mallet or deadblow hammer. Use caution to not damage the powdercoat finish. The bracket is in the correct location when the holes for the stock track bar location line up. See **Figure 3**.



Figure 3. Installing Synergy Manufacturing Track Bar Bracket

5. Insert the Synergy Manufacturing Lower Plate through the slots in the bottom of the factory track bar bracket with the circular plate up and the wide end towards the front of the vehicle. See **Figures 4 and 5**.



Figures 4 and 5. Installing the Synergy Manufacturing Lower Plate

6. Apply threadlocker and insert the shorter (35mm long) bolt and washer up through the bottom of the Lower Plate and then push the plate up and slide the bolt through the track bar bracket. See **Figures 6 and 7**.



Figures 6 and 7. Installing the 35mm Long Bolt

7. Install the Synergy Manufacturing Nut Tab as shown in **Figure 8** and loosely thread in the bottom 35mm bolt.



Figure 8. Installing Nut Tab

8. Install the provided spacer sleeve in place of the track bar in the factory track bar bracket. Apply threadlocker and loosely install a provided 90mm long bolt with washer. See **Figure 9**.



Figure 9. Spacer Sleeve Installed

9. Install the track bar in the bracket. Apply threadlocker and loosely install the last 90mm bolt and washer provided through the track bar. See **Figure 10**.



Figure 10. Track Bar and Hardware Installed

10. Torque bottom 35mm long bolt to 110 lb-ft first with a 22mm socket. It will be necessary to use a short socket and an extension. See **Figure 11**.



Figure 11. Using a Short Socket and Extension to Torque Bottom Bolt



JEEP WRANGLER REAR TRACK BAR RELOCATION BRACKET INSTALLATION INSTRUCTIONS

11. Torque all remaining hardware to 110 lb-ft. Torque track bar bolts at ride height in order to prevent bushing bind with the factory track bar.
12. Re-check all bolt torques after 100 miles of driving and after every trip off road.

Installation is Complete

Table 1. Jeep JL Bolt Torques

Bolted Joint Location	Wrench Size	Torque
Axle Side Track Bar Bolt	22mm	110 lb-ft
Frame Side Track Bar Bolt (Factory)	21mm	110 lb-ft
Synergy Manufacturing Track Bar Bracket Bolts	22mm	110 lb-ft