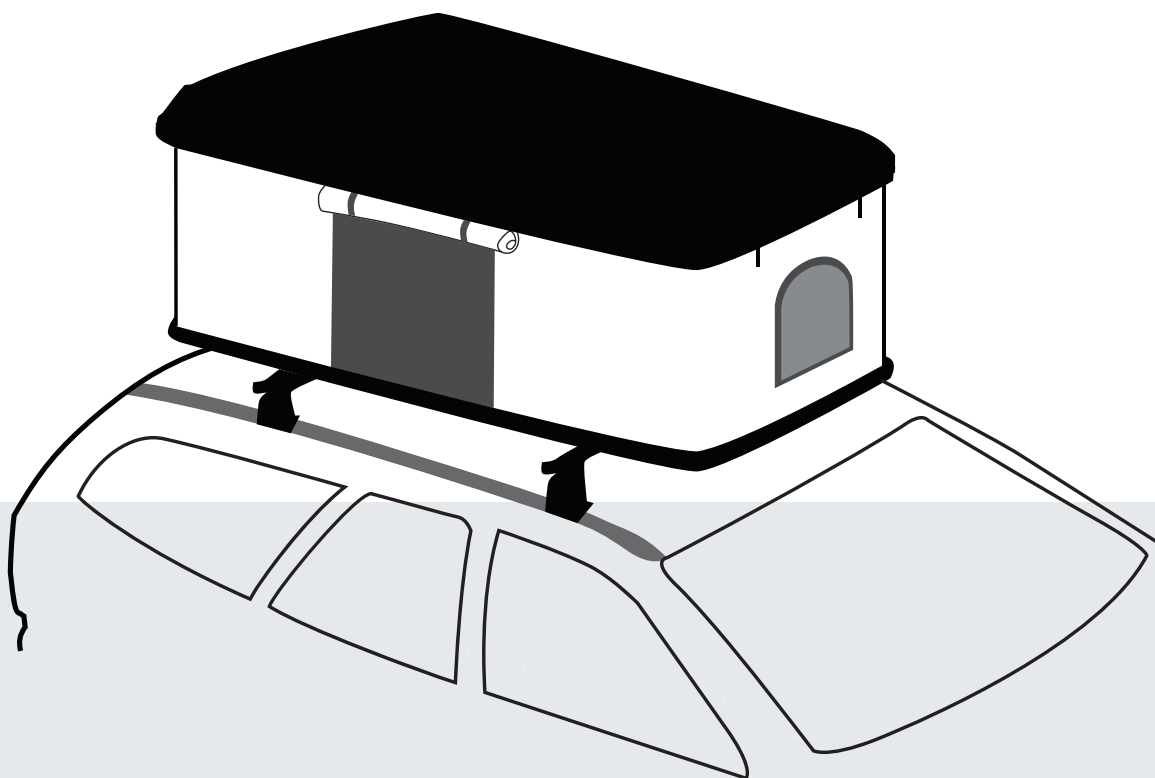




HD Bundu Hard Shell Pop Up Roof Top Tent



**CAREFULLY READ INSTRUCTIONS
PRIOR TO THE FIRST USE OF THE
HD BUNDU POP UP ROOF TOP TENT**

GET TO KNOW YOUR ROOF TOP TENT

We recommend you check all parts are included prior to first use.

Bill of Material

1x Ladder

1x Lantern

4x Top Bracket

4x Bottom Bracket

8x Screws

8x Nuts

PREPARATION FOR INSTALLATION

1

Have two people stand at the front of the roof tent, and two people at the back.

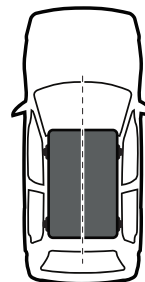
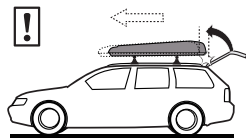
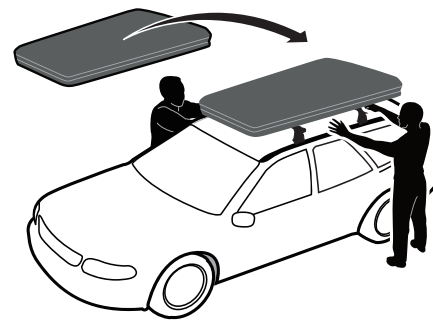
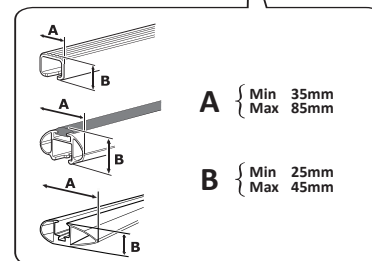
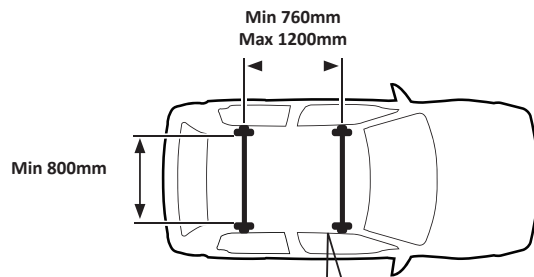
Grab the panel on the bottom of the roof top tent and lift up to your waist

Lift the roof tent up to your shoulders, and then above your head.

Gently slide the roof tent onto your cross bars.

Make sure the roof tent is centered

NOTE: It is easiest to mount the roof tent from the side of your vehicle, not from the front or the back



HD Bundu Hard Shell Pop Up

SET-UP & CARE INSTRUCTIONS

18199901 HD Bundu 2 - Hard Shell Pop Up Roof Top Tent
18199902 HD Bundu 3 - Hard Shell Pop Up Roof Top Tent

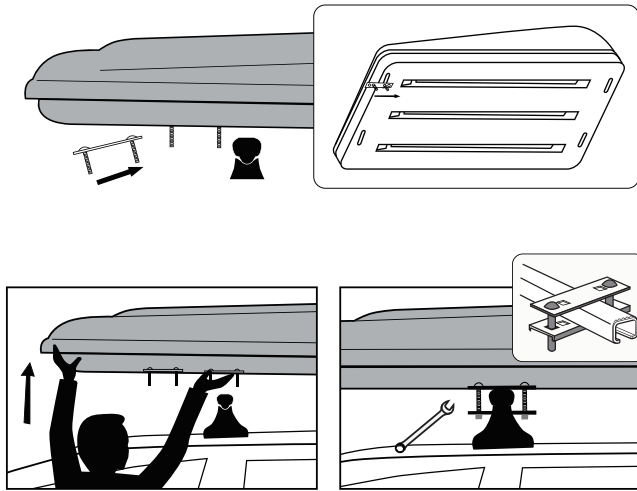
2

Install brackets to your roof rail using bottom brackets, top brackets, and hardware

Attach bracket configuration to bottom of tent

Lift Tent and place on the roof rail

Install bottom plate to secure tent to rail

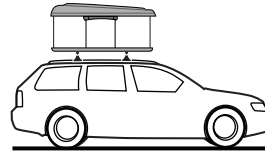
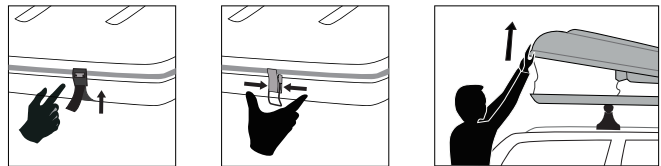
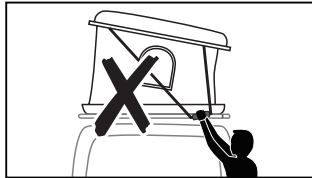


3

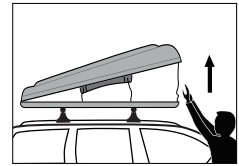
Opening the Tent

Lift Latch

Squeeze latch and lift up tent to both sides



OPEN THE TENT



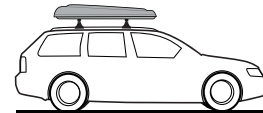
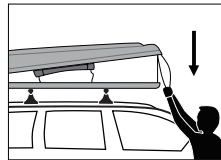
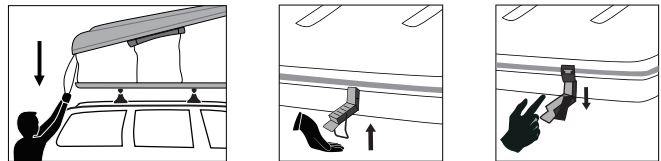
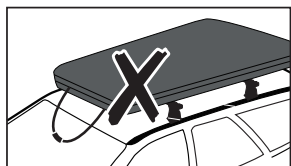
Closing the Tent

Pull tent down using nylon strap

Pull latch up and hook the metal piece.

Pull latch down to secure the tent

NOTE: Make sure you tuck all contents in before closing latch

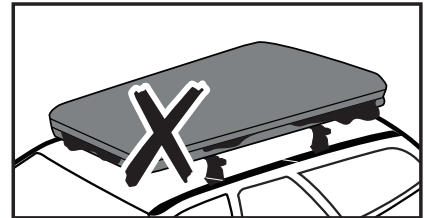
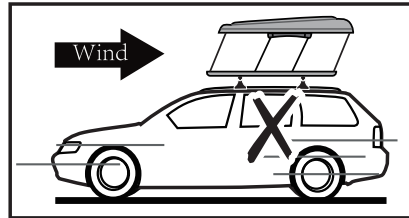
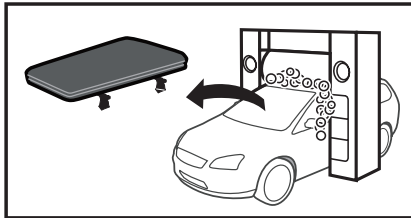
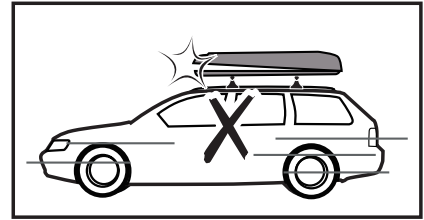
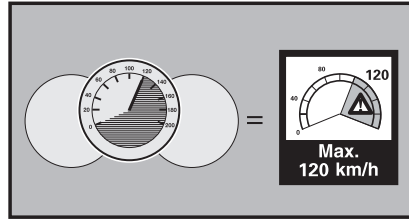
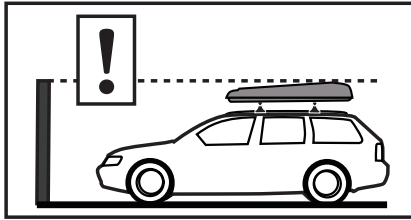


CLOSE THE TENT

HD Bundu Hard Shell Pop Up

SET-UP & CARE INSTRUCTIONS

18199901 HD Bundu 2 - Hard Shell Pop Up Roof Top Tent
18199902 HD Bundu 3 - Hard Shell Pop Up Roof Top Tent



LADDER INSTALLATION

4

Inclination angle should not exceed 75 degrees

Ladder shall be on an even, level and unmovable base

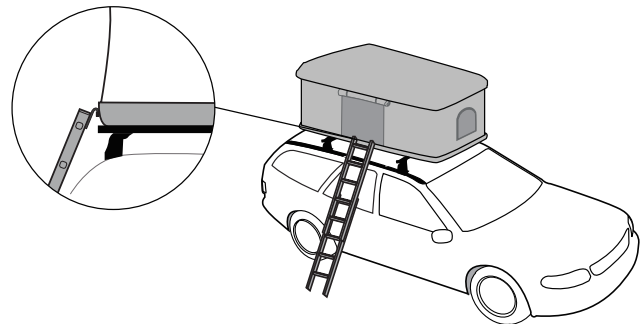
Leaning ladder should lean against a flat non-fragile surface and should be secured before using e.g. tied or use of suitable stability device

When positioning the ladder, please take into account the risk of collision with the ladder e.g. from pedestrians, vehicles or doors (no fire exits) and windows where possible in the work area

Identify any electrical risks in the work area, such as overhead lines or other exposed electrical equipment

Ladder shall be stood on its feet, not the rungs or steps

Ladders shall not be positioned on slippery surface (such as ice, shiny surface or significantly contaminated solid surface) unless additional effective measures are taken to prevent the ladder slipping or ensuring contaminated surfaces are sufficiently clean



HD Bundu Hard Shell Pop Up

SET-UP & CARE INSTRUCTIONS

18199901 HD Bundu 2 - Hard Shell Pop Up Roof Top Tent
18199902 HD Bundu 3 - Hard Shell Pop Up Roof Top Tent

5

Do not exceed the maximum total load

Do not overreach, users should keep their buckle (navel) inside the stiles and both feet on the same step/rung throughout the task.

Do not step off a leaning ladder at a higher level without additional security, such as tying off or use of a suitable stability device

Do not use standing ladders of access to another level

Do not stand on the top three steps/rungs of a leaning ladder

Ladders should only be used for light work of short duration

Do not use the ladder outside in adverse weather conditions, such as strong wind

Take precautions against children playing on the ladder

Face the ladder when ascending and descending

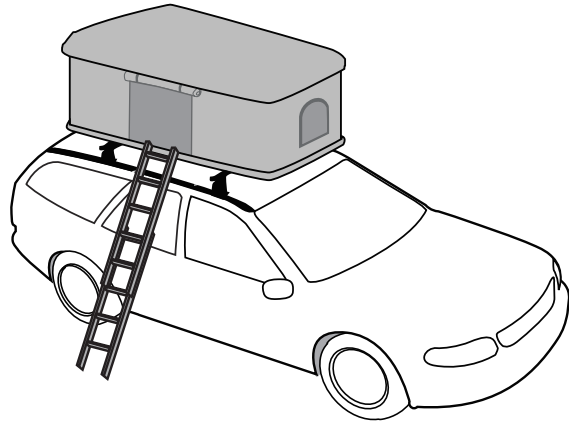
Keep a secure grip on the ladder when ascending and descending

Do not use the ladder as a bridge

Wear suitable footwear when climbing a ladder

Avoid excessive side loadings e.g. drilling brick and concrete

Do not spend long time on a ladder without regular breaks (tireless is a risk)



Opening the Ladder:

Automatic locking: each rung of your ladder has 2 locking pins are blocked, automatically inserted into the slots of the uprights in place when the ladder is extended

6

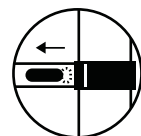
The two black buttons in both sides

• **Unlocked position:** There is a gap between the buttons and the spar

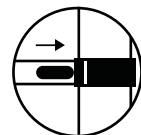
• **Locked position:** The buttons are located directly on to leg.



Unlocked



Locked

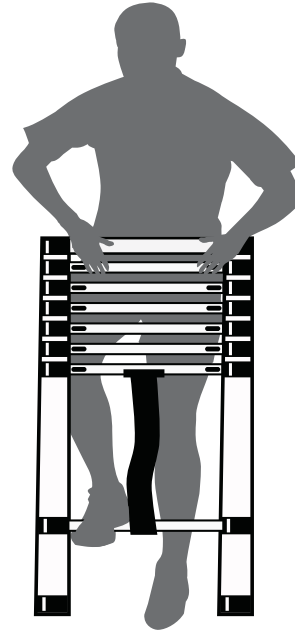


COMPLETE THE LADDER EXTENSION

7

The ladder should be on a firm and level ground, move one foot on the lowest rung.

The top-rung off and check if the buttons are locked. Repeat the process with each of the next lower rung, until the arms are completely extended

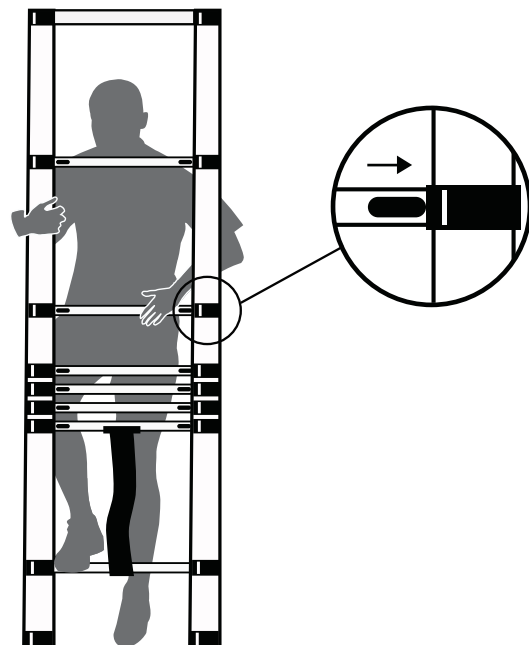


PARTIAL EXTENSION OF THE LADDER

8

Place the ladder on a firm and flat ground, move one foot on the lowest rung.

The lowest rung off and check if the buttons are locked. Repeat the process with each of the next higher rung, until the arms are completely extended.



HD Bundu Hard Shell Pop Up

SET-UP & CARE INSTRUCTIONS

MARCH 2024

CLEANING

Clean with cold water and a soft bristle brush. Do not use soaps and detergents. Do not expose to petrol, diesel, oils or chemicals of any nature.

STORING

When storing, make sure tent is closed before the moving of your vehicle. Make sure all contents are tucked and not exposed when tent is closed. When not attached to your vehicle, make sure you store your RTT in a cool and dry area.

WARNINGS

- If you have any back, knee or any other health complications, do NOT attempt to mount the roof tent on your vehicle
- Your vehicle MUST have a roof track or cross bars installed in order to mount the roof tent
- The cross bars MUST have a dynamic weight load of at least 165 lbs (75 kgs) and MUST be at least 30" (76 cm) apart.

Telescopic Ladder

- Please ensure that you are fit enough to use the ladder, Be certain that medical conditions or medication, alcohol or drug abuse are prepared to make the ladder are used in unsafe condition
- When transporting ladders on roof bars or in a truck, please ensure they are suitably placed to prevent damage
- Inspect the ladders after delivery and before first using to confirm condition and operation of all parts
- Visually check the ladder is damaged or not and be sure it is safe to use at the start of each working day when the ladder is not to be used
- For professional users, regular periodic inspection is required
- Ensure the ladder is suitable for the task
- Do not use a damaged ladder
- Remove any contamination from the ladder, such as wet paint, mud, oil, or snow
- Always check that all buttons are on the exact position "Locked" before climbing on the ladder



DO YOU NEED OUR HELP?



CUSTOMER SUPPORT 833-226-4863



SALES@OVERLANDVEHICLESYSTEMS.COM

WANT TO SHOW US YOUR RIG?
CHECK OUT OUR SOCIAL!

@overlandvehiclesystems

